

WEB





WEB WORKS!

www.webwerkt.be





WEB: What?

- NGO
- Founded in 1992
- “association without profit making goal”
- Board of directors: representatives of local authorities, labour unions, employers’ organizations and a local polytechnic



WEB: What?

WEB: Work experience companies

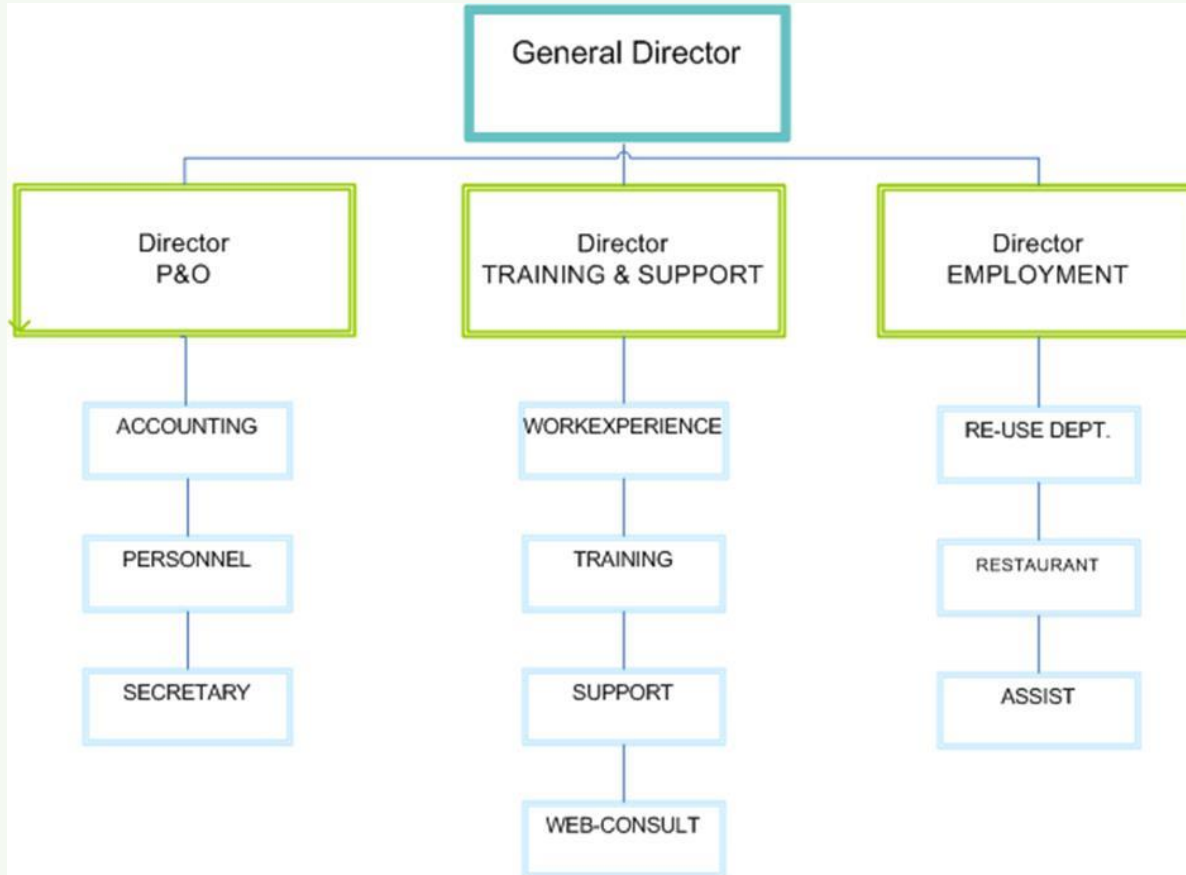
WEB provides support and training to job-seekers and workers who need intensive guidance in finding sustainable employment. The support programmes offered includes coaching and training along with work experience.

For the group of job-seekers who are unable to function in an open labour, even after intensive coaching, training and work experience, WEB wants to offer additional and meaningful employment.

WEB also supports employers by providing training and support for their employees and by providing advice and support in developing a customised HR policy.



Organization chart





Employment



Re-use department



- Collection of used goods
- Second hand shops
- Repair domestic appliances
- Social workplace: 68,5 FTE



ResourceLab

- Ecodesign
- Partnership with colleges
- social workplace 5 FTE





Restaurant



- Social restaurant
- “Heilig Graf”
- Catering
- Social werkplace: 17,5 FTE



Assist



- Lokale service economy
- Assist cleaning services
 - “service vouchers”
 - AVG. 2013: 38 FTE
- Assist energy savers
 - Energy screenings
 - 3,5 FTE
- Assist maintenance services
 - Small jobs inside & outside
 - 12,5 FTE



Training and support



Workexperience



- Labour contract for a period of 1 year
- Over 2 years unemployed and great distance to labour market.
- 4 initiatives
 - Adcotel: 15 FTE
 - Logistic assistant: 12 FTE
 - Informatiek: 15 FTE
 - Logistic support: 5,5 FTE



training



Kitchen aid

16 trainees a year

In cooperation with Janssen Pharmaceutica



Outsourced training VDAB (ESF)

Gardener

Painter

ACE

Labour market oriented training for students from part-time education





Coaching on the workflow

- **Workplace learning**
- **Job coaching on the workflow**



coaching

- Coaching and support
- Training on labour market skills
- Jobhunting
- mediation





WEB-Consult

Consulting on competency development

- Training employees
- coaching
- Recognition of acquired competences



Facts and figures



Number of people employed

	2004	2005	2006	2007	2008	2009	2010	2011	2012	2013
trainers/coaches	49	62	62	71	80	83	83	83	83	89
social workplace	68	69	78	82	89	94	96	109	105	113
local services	25	34	52	51	51	62	62	65	72	81
CeBeS	3	3	3	3	3	3	3	3	3	3
work experience	50	52	52	46	50	42	49	53	46	56
Total	195	220	247	253	273	284	293	313	309	342



Number of people reached

		2005	2006	2007	2008	2009	2010	2011	2012	2013
training										
	kitchen aid	21	20	18	13	16	18	18	15	17
	commercial clerk	33	34	32	46	38	37	35	35	36
	outsource vdab	52	56	12	79	66	84	18	28	31
	ACE	0	95	128	103	121	124	154	170	163
	total	106	205	190	241	241	263	225	248	247
coaching										
	workplace training/coaching	0	0	0	0	109	122	108	196	224
	jobcoaching	0	0	0	6	51	45	52	69	70
	trajectory coaching	167	233	232	260	317	230	311	328	219
	recogn. Acq. Comp.					94	91	81	89	136
	total	167	233	232	266	571	488	552	682	649
grand total		273	438	422	507	812	751	777	930	896



vzw WEB | vzw SW WEB | Steenweg op Tielen 70 | 2300 Turnhout | T 014 46 27 10 | F 014 46 27 11 | info@webwerkt.be | www.webwerkt.be